



*Control* **CABLES**  
INC.

Catalog 02  
[controlcables.com](http://controlcables.com)

## About Us

Control Cables Inc. (CCI) was established in 1980. Control Cables has grown into one of the largest cable specialty companies in the United States.

We are able to design and produce a wide range of cables and controls for all types of applications. From duplicating cables no longer available as a dealer item to street rods & classic cars to cables & hardware for all types of racing applications. CCI can design a cable for most any application (custom or standard).

With a quality product built by a knowledgeable staff Control Cables has continued to grow. With the recent expansion to a new 7200sq. Ft. facility and an onsite small run machine shop we are able to manufacture most anything. As with any business it is possible that you may have a cable or envision a design that is not shown in this catalog. That does not mean that CCI cannot make it. Generally if you can give us specs. on your particular application we can build a cable to suit your needs.

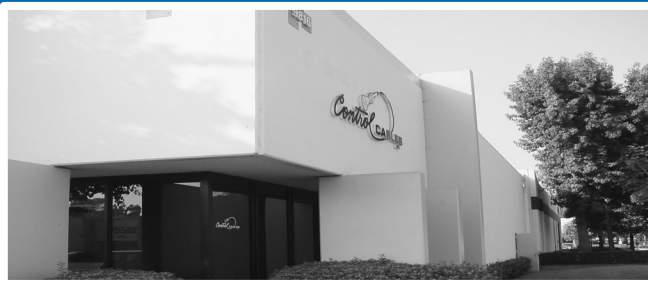
Control Cables can and does ship to most anywhere in the world.

CCI has the technical knowledge and experience to assist you in designing most types of cables for your particular application. Call us for any cable or hardware related problems.

CCI is also a master distributor for Quadrastat Controls and a full stocking Pertronix electronic ignition products warehouse.

### Table of Contents

About us.....	2
Push Pull Ordering Specs.....	3
Control Head Ordering Specs.....	4
Control Head Diagrams.....	5
Modulator Cables & Valves.....	6
Automotive Shift Cables.....	7
Quadco Controls.....	8
Industrial Brake Cables.....	9-12
Mounting Hardware & Clevises.....	13
Ball Joints T-handles & Knobs.....	14
Eyelets, Pivots, & Rod Ends.....	15
Pertronix.....	16
Miscellaneous Cables.....	17
Miscellaneous Levers & Controls.....	18
Street Rod Throttle Cables & Controls.....	19
Street Rod Levers & Cables.....	20
Street Rod Brake Levers & Hardware.....	21
Street Rod Brake Layout Sheets.....	22-23
Apparel.....	24



#### Contact Information

Phone: 562 949-0455

Fax: 562 949-0595

E-mail: [sales@controlcables.com](mailto:sales@controlcables.com)

#### Hours:

M-F 8:00 - 4:30

9816 Alburdis Ave.  
Santa Fe Springs, Ca 90670

**Construction**

- 173- Utility grade with stainless end rods.
- 174- Marine utility with stainless end rods, stainless support tubes, and stainless armor inner member.
- 175- Marine utility with stainless conduit fittings, end rods, support tubes, and stainless inner member.
- 184- Low friction with Teflon and nylon wear surfaces, stainless steel end rods, support tubes, and stainless inner member. **Available in ULD & VLD only.**
- 314- (EXT)Low friction with all plastic wear surfaces, stainless steel end rods and support tubes.
- 804- High temp cable. **Available in ULD PULL ONLY** with stainless end rods, and support tubes.
- 814- High temp cable **Available in ULD, VLD, & LD only.** Stainless steel end rods, and support tubes.

**Duty (load carrying capacity)**

Available in: **U** (Ultra Light Duty) **V** (Very Light Duty) **L** (Light Duty) **M** (Medium Duty) **H** (Heavy Duty). Determine by load or end rod diameter from table A below.

**Conduit End Fittings**

TT (Threaded fittings both ends), GG (Grooved fittings both ends), TG (Threaded fitting on one end and grooved on the other). See table A and diagram B below for dimensions.

**Length of Travel**

1 to 6 inches. Determine from table A

**Length Overall (in inches)**

**Table A**  
**Duty Load capacities and length of travel**

All Cables				Threaded Conduit End Fittings						Grooved Conduit End Fittings													
Basic Part No.	Thread F	Min. Bend Radius Inches	Pull Load Capacity pounds	Push Load Capacity for travel shown in pounds					Thread "W"	Dimension "A" for travel shown in inches						Groove Dim. Radius	Root Dia.	Dimension "A" for travel shown in inches					
				1" & 2"	3"	4"	5"	6"		1"	2"	3"	4"	5"	6"			1"	2"	3"	4"	5"	6"
U	10-32x.089	2	100	40	35	N/A	N/A	N/A	7/16-20x1.12	4.38	5.87	7.38	8.87	10.38	11.87	0.13	0.25	3.69	5.19	6.69	8.19	9.69	11.13
V	10-32x.089	2	120	80	70	60	45	30	7/16-20x1.12	4.38	5.87	7.38	8.87	10.38	11.87	0.13	0.25	3.69	5.19	6.69	8.19	9.69	11.13
L	1/4-28x1.00	3	230	150	125	100	75	50	5/8-18x1.50	4.62	6.12	7.62	9.12	10.62	12.12	0.17	0.41	4.00	5.50	7.00	8.50	10.00	11.50
M	5/16-24x1.00	5	400	250	210	170	130	100	11/16-16x1.75	5.06	6.56	8.06	9.56	11.06	12.56	0.17	0.47	4.38	5.87	7.38	8.87	10.38	11.87
H	3/8-24x1.38	6	1000	700	600	500	400	300	7/8-14x2.00	5.69	7.19	8.69	10.19	11.69	13.19	0.20	0.50	5.19	6.69	8.19	9.69	11.19	12.69

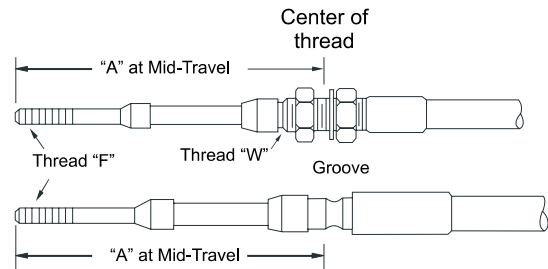
**Conduit End Fitting**

**Type T**

Threaded conduit end fitting for bulkhead mounting.

**Type G**

Grooved conduit end fitting for mounting with U-bolts or clamps.



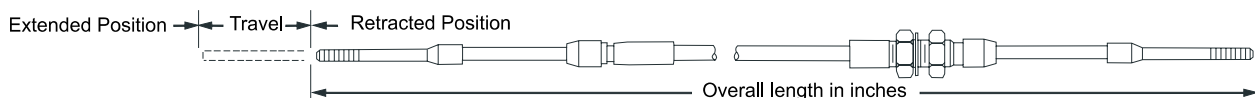
**Overall length and travel in inches**

For Replacement Cables

- A. Remove old cable
- B. Measure length as shown below
- C. Measure length of travel. 1" through 6"
- D. Determine size of thread "F"
- E. Select basic part number from table above.

For New Cables

- A. Determine overall length
- B. Measure travel required. Add 1/4" and round upward to the nearest whole inch.
- C. Determine loads and select Basic part number from the table above.



## Ordering Code for Control Head Cables

2 1 L 3 2 DF (6) - 3 - 120

**Control Head Type** \_\_\_\_\_

- 2 Micro Adjust
- 5 Twist Lock with 2.38" Plastic Handle
- 6 Twist Lock 3.5" Metal Handle
- 7 Non-Locking with 3/8"-24 UNF Mounting
- 8 Non-Locking with 7/16"-20 UNF Mounting
- 9 Non-Locking with 5/8"-18 UNF Mounting

**Cable Type** \_\_\_\_\_

- 1 Low Friction - EXT
- 6 Utility

**Cable Size** \_\_\_\_\_

- V Very Light Duty
- L Light Duty

**Stainless Steel Options** \_\_\_\_\_

- 3 With Stainless Steel End Rods
- 4 With Stainless Steel End Rods, Support Tube, and Innermember Armor

**Output End Fittings** \_\_\_\_\_

- 2 Threaded Conduit Fitting
- 3 Grooved Conduit Fitting

**Micro Adjust only Cable Options** \_\_\_\_\_

- D Disconnect Feature
- F Friction Lock Accessory

**Seal Options (Use This Number Only if Requesting Optional Seals)** \_\_\_\_\_

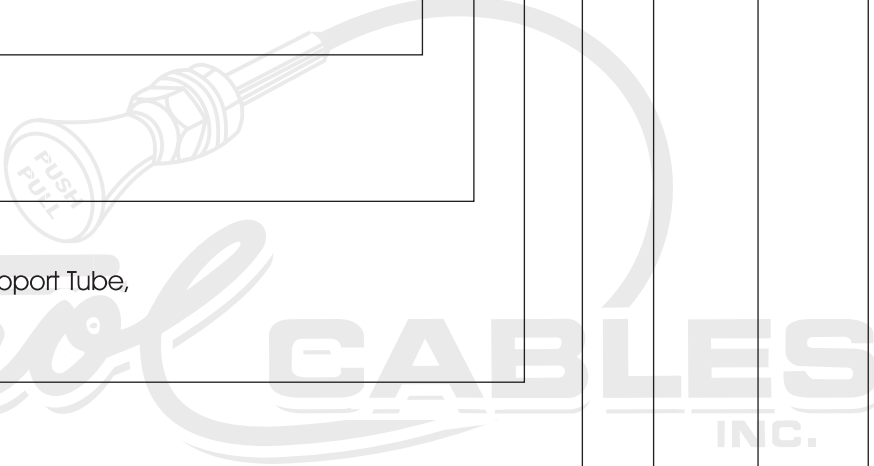
- 5 Improved Model 5 Wiper Seal is Standard on Low Friction - EXT and Utility
- 6 Model 6 Wiper Seal, Optional on All Controls

**Cable Travel - 1" To 6"** Excluding Micro Adjust Cables \_\_\_\_\_

(For Output Fittings Style 2 and 3 Only)

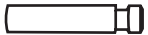
**Overall Length** \_\_\_\_\_

See Overall Length Dimensions. Points Indicated on Each Illustration



# Control Head Cables

Micro-Adjust	Twist-Lock	Non-Lock	Non-Lock	VLD	VLD	LD	LD	VLD	LD	COMM
		 <b>Must specify knob</b>	 <b>Must specify knob</b>							
				Travel "A" 1" 4.94" 2" 6.94" 3" 8.94"	Travel "A" 1" 4.25" 2" 6.25" 3" 8.25"	Travel "A" 1" 5.18" 2" 7.18" 3" 9.18"	Travel "A" 1" 4.56" 2" 6.56" 3" 8.56"			.075 Stainless Steel Wire 79V00-L
				81V32 81V42	81V33 81V43	91L32 91L42	91L33 91L43	CA215	CA216	
				51V32 51V42	51V33 51V43	51L32 51L42	51L33 51L43	CA217	CA218	59V00-L
				21V32DF 21V42DF	21V33DF 21V43DF	21L32DF 21L42DF	21L33DF 21L43DF	CA219	CA220	29V00-L
				EXT	EXT	EXT	EXT	UTL	UTL	COMM
				UTL	UTL	UTL	UTL	UTL	UTL	



161-579  
Add 5 to fifth digit of cable



161-581  
Add 4 to fifth digit of cable

3/8-24 Threads

**These Items are for Commercial Cables Only**

## Modulator Cables

Modulator and cable interconnect Allison automatic transmission with engine fuel control. Modulator can be set to either "Push" or "Pull" to operate.

## Cablecraft Modulator Unit with Cable


### Cable Output End

#### Grooved Mount

173 Utility  
174 Utility

#### Threaded Mount

173 Utility  
174 Utility

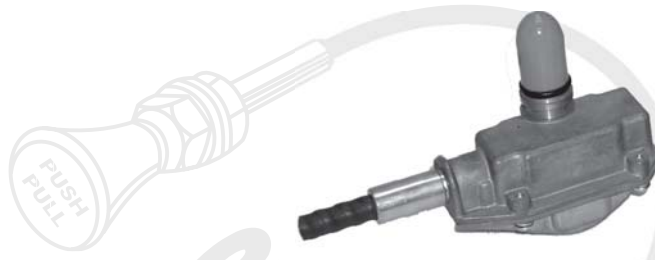
	Pull to Operate	Push to Operate	Optional Parts
<b>Grooved Mount</b>	CA343-3-001-L CA343-4-001-L	CA343-3-002-L CA343-4-002-L	Slip Clevis AC-310 
<b>Threaded Mount</b>	CA341-3-001-L CA341-4-001-L	CA341-3-002-L CA341-4-002-L	

## Morse Modulator Valve



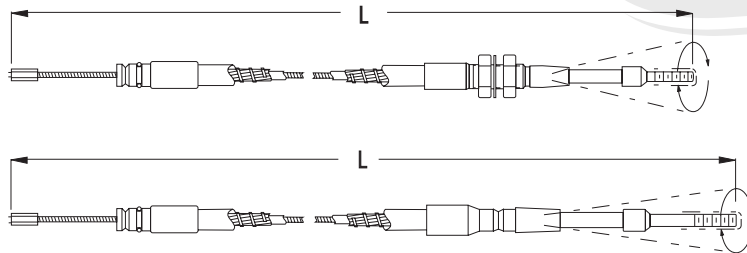
Morse P/N 310821

## Cablecraft Modulator Valve



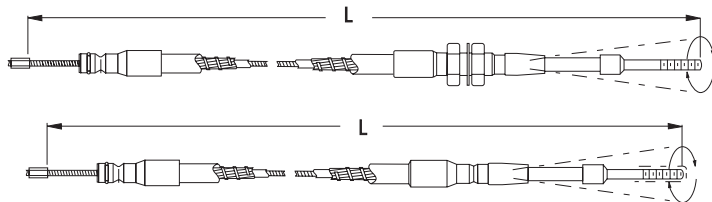
Cablecraft P/N 165-900

## Replacement Cables for Cablecraft Modulator



Cable Only Part No.	Cable Output End
	<b>Threaded Mount</b>
CA341-3-L CA341-4-L	173 Utility 174 Utility
	<b>Grooved Mount</b>
CA343-3-L CA343-4-L	173 Utility 174 Utility

## Morse Modulator Unit & Cable

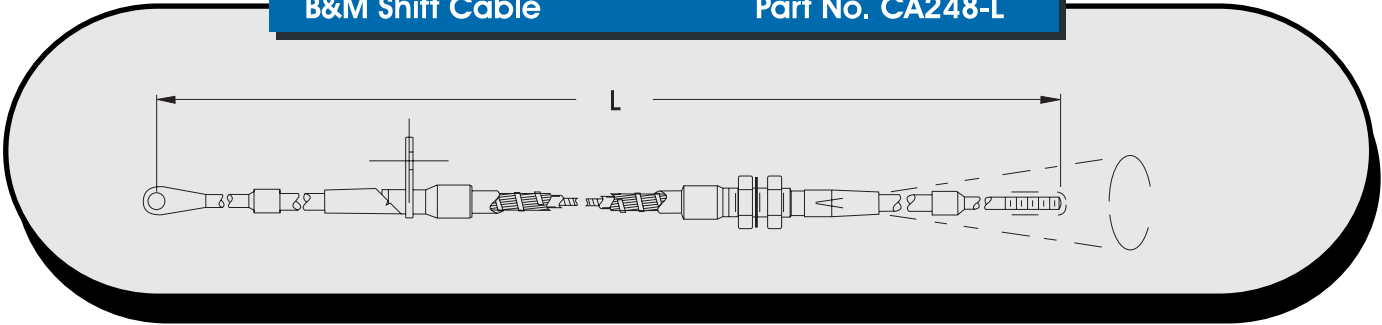


Cable Only Part No.	Cable Output End
	<b>Threaded Mount</b>
CA213T-L CA214T-L	173 Utility 174 Utility
	<b>Grooved Mount</b>
CA213G-L CA214G-L	173 Utility 174 Utility

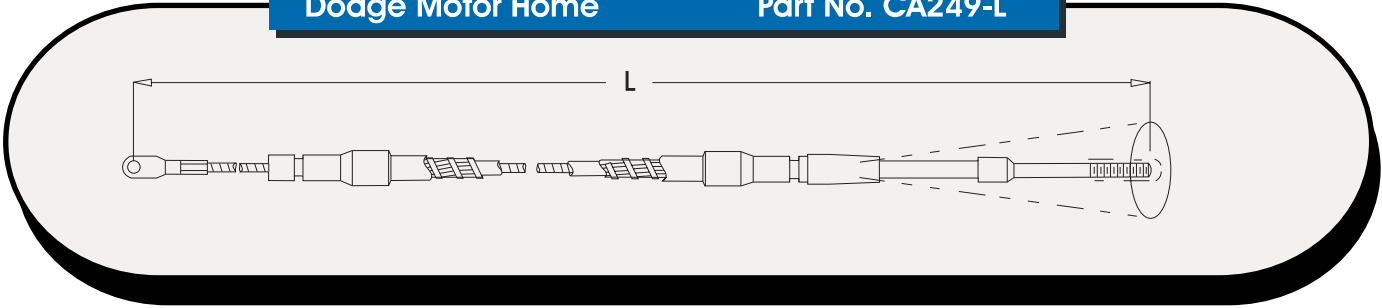
**Automotive Shift Cables**

Replacements for popular brand shift cables.

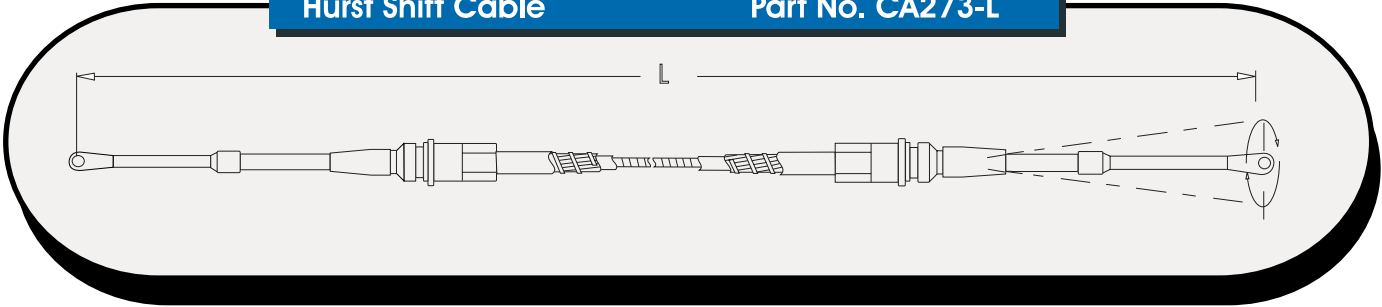
**B&M Shift Cable**                      **Part No. CA248-L**



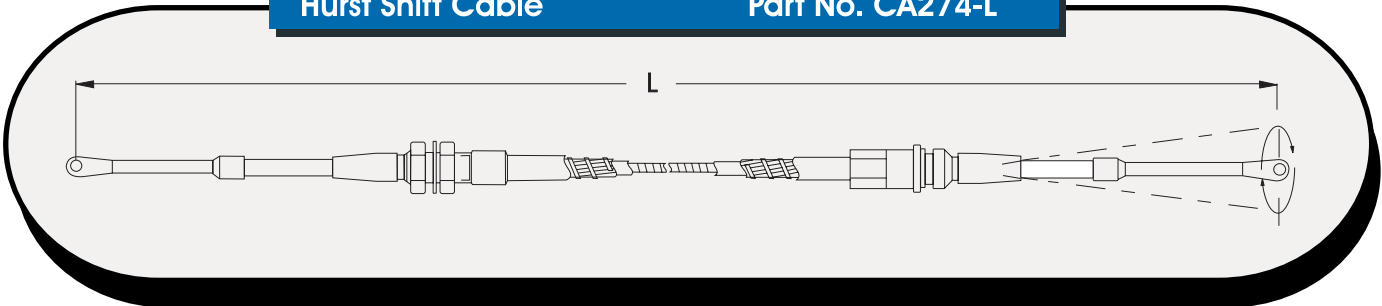
**Dodge Motor Home**                      **Part No. CA249-L**



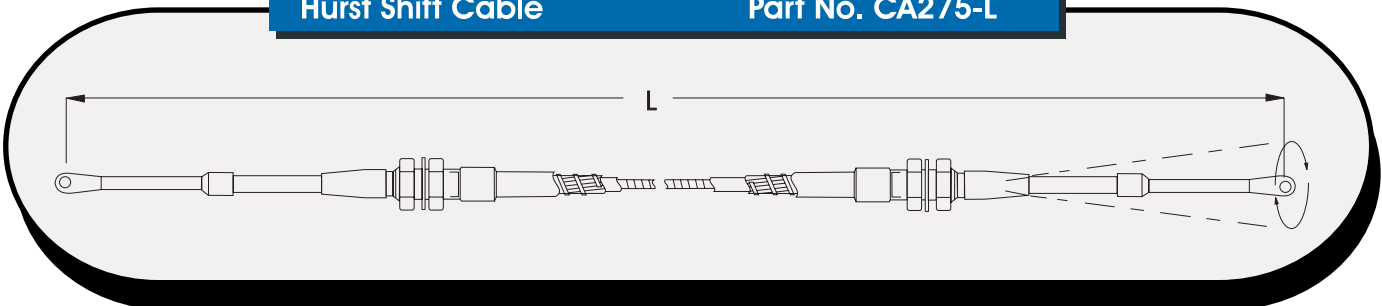
**Hurst Shift Cable**                      **Part No. CA273-L**



**Hurst Shift Cable**                      **Part No. CA274-L**



**Hurst Shift Cable**                      **Part No. CA275-L**



## Quadco

### Q Series Controls

Self Locking  
Different Levers  
Available  
Many Options  
Available Call for  
Details



### C72 Series Controls

Friction Controls  
Different Levers  
Available  
Many Options  
Available Call for  
Details



### Automatic Transmission Controls

Available in T-Handle  
or Round Knob  
Neutral Reverse Switch  
Available  
Many Options  
Available Call for  
Details



### C80 Series Controls Stackable

Controls Used on  
Spool Valves  
Available in  
Straight (**C85**) or  
Right Angle (**C84**)  
Different Lever Lengths Available  
Uses VLD, LD, and MD Series Cables (**Groove**)  
Many Options Available Call for Details



### Hydrostatic Transmission Controls

Single or Dual Controls Available.  
Shift or Throttle Control  
Available in Linear or Non Linear  
Friction or Self Locking  
Many Options Available Call for Details



### C60 Series Controls

Joystick Controls Used on Spool Valves  
Different Lever Lengths &  
Handle Options  
Uses **VLD**, **LD**, and **MD**  
Series Cables  
Many Options Available  
Call for Details



### Power-Shift Transmission Controls

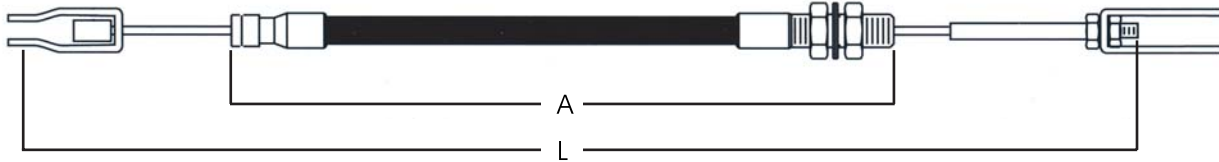
Single or Dual Controls Available.  
Shift and Speed Control  
Many Options Available Call for  
Details



## Industrial Brake Cables

### Preliminary Ordering Procedure

#### For Pull-Only Cable Controls



### To Specify a Pull Control, The Following Information Must be Given in The Order Listed:

1. Left Innermember End Fitting Part Number.
2. Left Conduit End Fitting Part Number.
3. Length "A" Between Conduit Fitting Reference Points in Inches.
4. Right Conduit End Fitting Part Number.
5. Right Innermember End Fitting Part Number.
6. Length "L" of Innermember Assembly Between Fitting Reference Points in Inches.
7. Travel of the Innermember in the Conduit in Inches. (Note Dimensions "L" Must be Sufficiently Greater Than Dimension "A" to Allow Desired Travel).

**\*Removable Items Should be Listed Separately.**

#### Sample order code:

**CS551 - 072 - 54 - 070 - TE505 - 64.5 - 6**

Left Innermember End Fitting Part Number \_\_\_\_\_  
(Clevis End Fitting with Cable Stop)

Left Conduit End Fitting Part Number \_\_\_\_\_  
(Grooved Conduit End Fitting)

Length of Conduit Assembly \_\_\_\_\_  
(54") "A" Dimension

Right Conduit End Fitting Part Number \_\_\_\_\_  
(Threaded Conduit End Fitting)

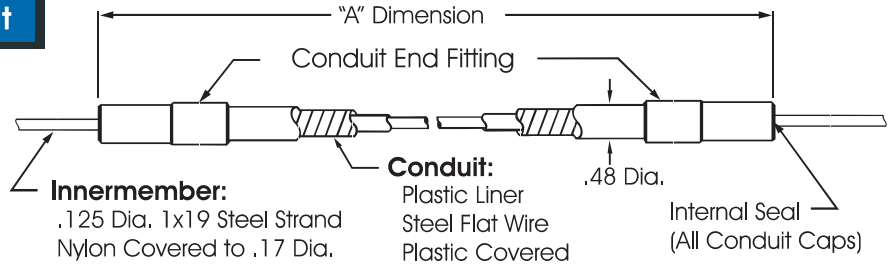
Right Innermember End Fitting Part Number \_\_\_\_\_  
(Threaded Innermember End Fitting)

Length of Innermember Assembly \_\_\_\_\_  
(64.5") "L" Dimension

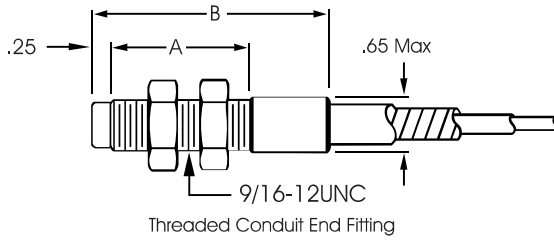
Travel in Inches \_\_\_\_\_  
(6")

# 1500 Pound Series with Lined Conduit

Ultimate load: 1500 lbs  
Minimum bend radius: 5"

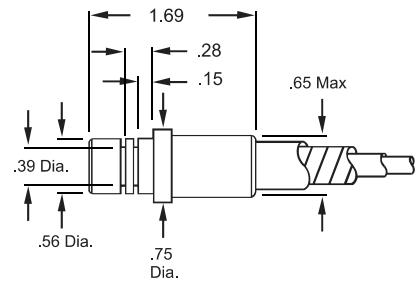


## Threaded Conduit End Fitting



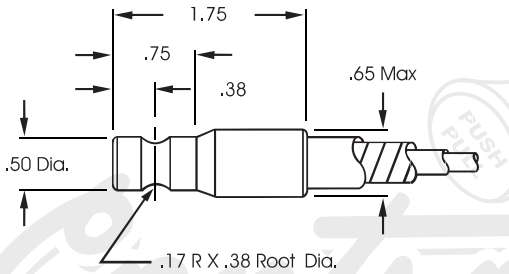
Part No.	A	B
060	1.4	2.7
061	2.1	3.4

## E-Clip Conduit End Fitting



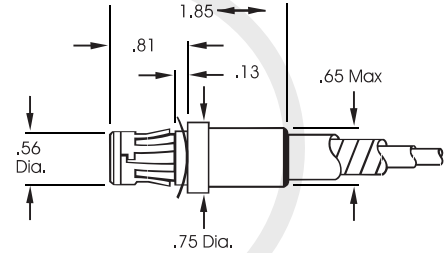
Part No.	Use E-Clip
064	175-435-025

## Grooved Conduit End Fitting



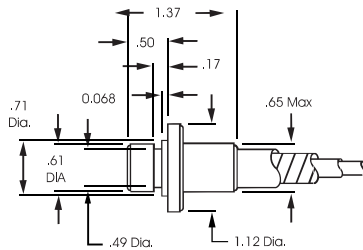
Part No. 062

## Clip-Lock Conduit End Fitting



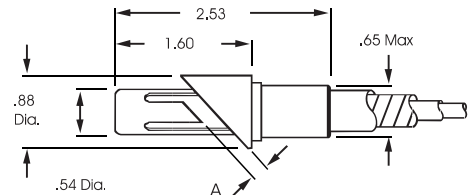
Part No. 065

## Grooved Conduit End Fitting



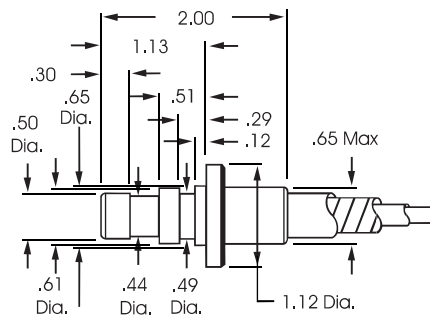
Part No. 026

## 48 Clip-Lock Conduit End Fitting



Part No.	A
066	.13
067	.20

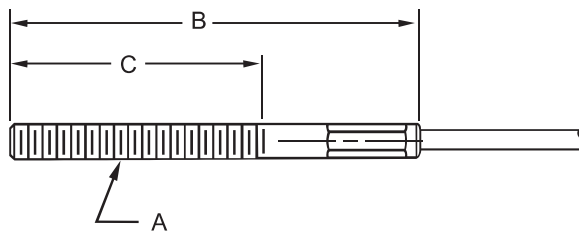
## Grooved Conduit End Fitting



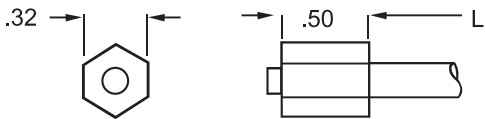
Part No. 027

# 1500 Pound Brake Cables

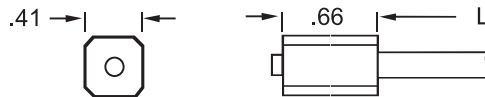
Threaded End Fitting



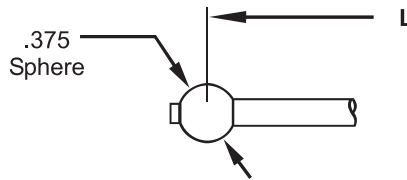
Part No.	A	B	C
TE504	5/16-24	3.62	2.25
TE504-6	5/16-24	2.00	1.00
TE504-007	5/16-24	6.00	4.63
TE506	3/8-24	2.62	1.50
TE523-001	1/4-28	3.62	2.50
TE8MM	8MM	5.00	4.00



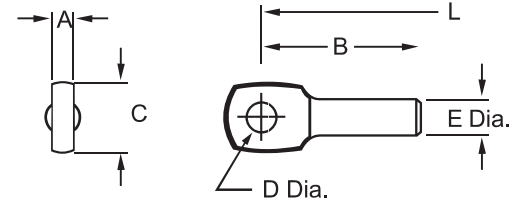
Cable Stop  
Part No. BEMV  
(Max-Load 2,000 lbs)



Cable Stop  
Part No. BE 501



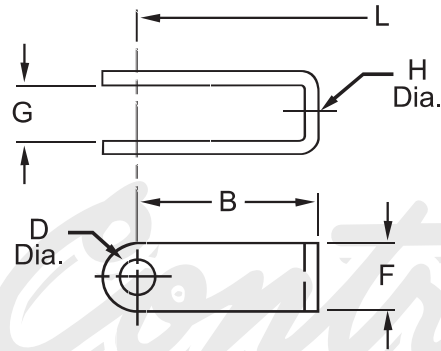
Ball End  
Part No. BT 821  
(Max-Load 2,000 lbs)



### EYE END

PART NO.	A	B	C	D	E
157-047-000	.235	1.81	.75	.323	.375
EE9158	.240	1.60	.75	.500	.437

## Strap Clevis Part Numbers



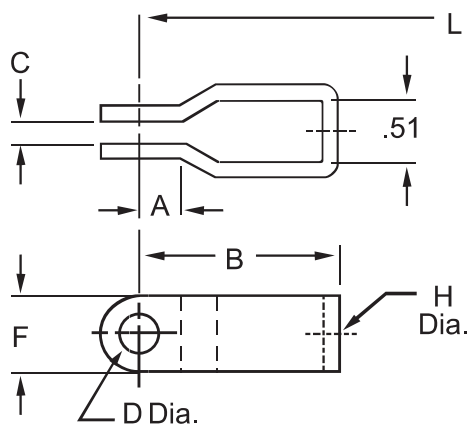
## 1500 and 3000 Series

### Open-Strap Clevis

	B	D	F	G	H
CS540	1.62	.31	.62	.43	.266
CS540-1	1.62	.31	.62	.43	.266
CS540-6	2.50	.38	.75	.57	.386
CS540-7	2.50	.31	.62	.51	.266
CS540-10	3.50	.31	.70	.85	.32
CS541	1.94	.38	.75	.51	.266
CS541-3	1.94	.38	.75	.51	.323
CS541-5	2.00	.38	.75	.51	.266
CS541-7	2.50	.38	.75	.51	.266
CS541-8	2.50	.38	.75	.51	.323
CS542*	1.08	.50	1.00	.58	.323

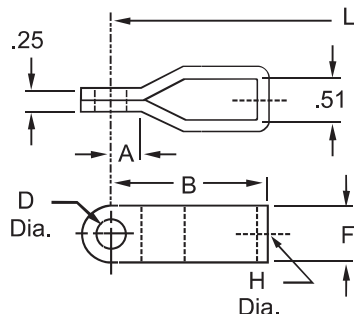
### Step Clevis Clevis

	A	B	C	D	F	H
CS 550**	.31	1.56	.19	.31	.62	.266
CS 550-1	.31	1.56	.19	.38	.62	.266
CS 550-2	.31	1.56	.19	.31	.62	.316
CS 550-4	.31	1.56	.19	.25	.62	.266
CS 551	.38	1.75	.25	.31	.62	.266
CS 551-1	.38	1.75	.25	.38	.62	.266
CS 551-2	.75	2.38	.25	.31	.62	.316
CS 551-3	.38	1.50	.25	.25	.62	.266
CS 552	.31	2.38	.25	.31	.75	.266
CS 552-1	.31	2.38	.25	.38	.75	.266
CS 552-3	.38	2.38	.25	.43	.75	.316
CS 552-4	.38	2.38	.25	.31	.75	.316
CS 553	.50	1.88	.19	.38	.75	.266



### Closed-Strap Clevis

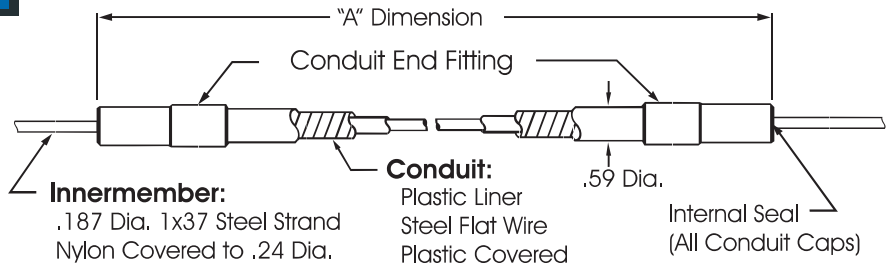
	A	B	D	F	H
CS 562	.31	1.62	.31	.62	.316
CS 563	.28	1.75	.31	.62	.316
CS 564	1.00	2.38	.38	.75	.316



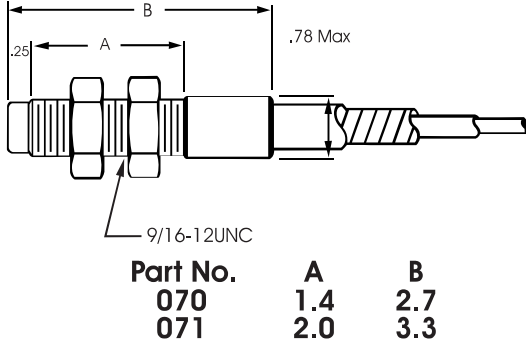
\*Use with 5/16 threaded end rod with nuts only  
\*\*Not available in 3000

# 3000 Pound Series with Lined Conduit

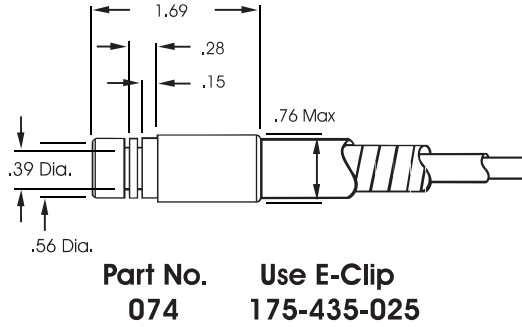
Ultimate load: 3000 lbs.  
 Minimum bend radius: 7"  
 See page 9 for ordering procedure.



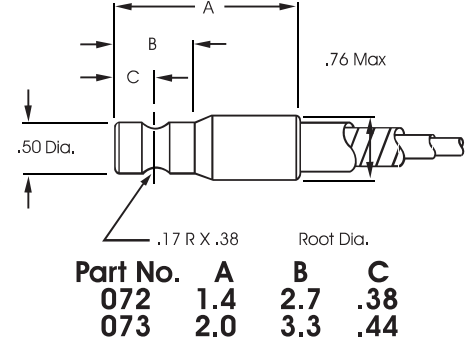
## Threaded Conduit End Fitting



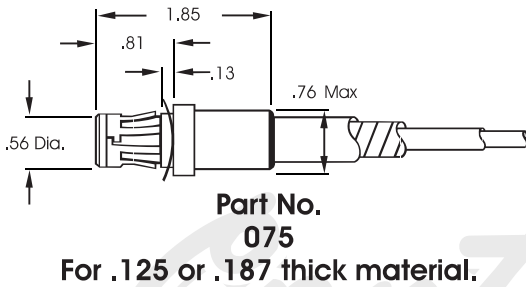
## E-Clip Conduit End Fitting



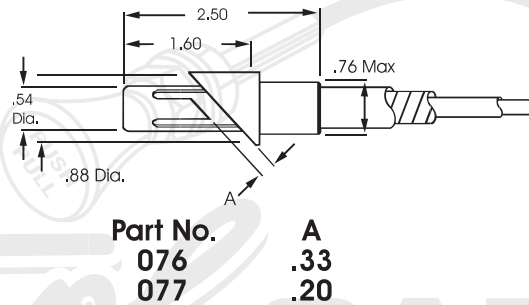
## Grooved Conduit End Fitting



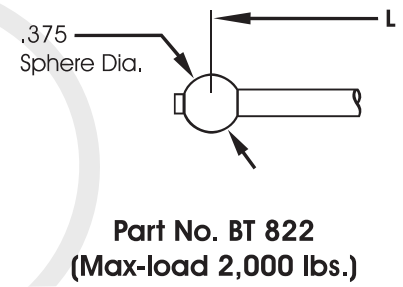
## Clip-Lock Conduit End Fitting



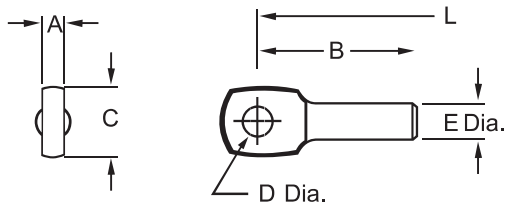
## 48° Clip-Lock Conduit End Fitting



## Ball End

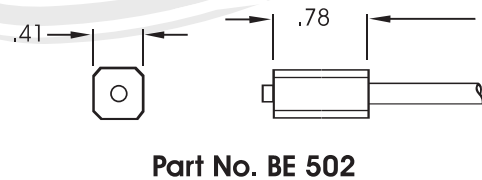


## Eye End

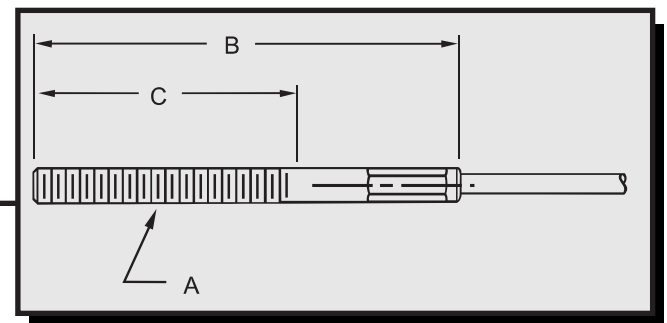


Part No.	A	B	C	D	E
157-047-002	.235	1.81	.75	.323	.375

## Cable Stop



## Threaded End Fitting



Part No.	A	B	C
TE 505	3/8-24	2.95	2.00
TE 505-1	3/8-24	1.88	1.00
TE 508	3/8-24	2.62	1.50
TE 509-1	3/8-24	4.95	3.75
TE 510-1	5/16-24	2.50	1.50
TE 510-2	5/16-24	3.62	2.24
TE 510-4	5/16-24	4.00	3.00
TE 510-5	1/4-28	3.62	2.50
TE 510-6	5/16-24	2.12	1.00
TE 510-7	5/16-24	2.88	1.50
TE 510-8	5/16-24	5.60	4.47
TE 510-9	5/16-24	3.00	1.91
TE 605	3/8-24	6.00	5.00

## Mounting Hardware

161-010-001	U-Bolt VLD / 30 Series	Steel
161-010-002	U-Bolt LD / 40 Series	Steel
161-010-003	U-Bolt MD / 60 Series	Steel
161-010-004	U-Bolt HD / 80 Series	Steel
161-011-001	Cable Clamp VLD / 30 Series	Steel
161-011-002	Cable Clamp LD / 40 Series	Steel
161-011-273	Cable Clamp Shim VLD-LD	Steel
161-011-AM	Aluminum 90° Swingover VLD / 30 Series	Aluminum
161-011-M	90° Swingover VLD / 30 Series	Steel
161-011-MS	Straight Swingover VLD / 30 Series	Steel
161-011-61	Bulkhead Bracket VLD / 30 Series	Steel
161-011-L	Half Round Aluminum Clamp LD /40 Series	Aluminum
161-011-P	Half Round Aluminum Clamp (Chute)	Aluminum
161-011-V	Half Round Aluminum Clamp VLD / 30 Series	Aluminum
161-011-VF	Full Round Aluminum Clamp VLD / 30 Series	Aluminum
161-012-000	Clip VLD / 30 Series	Steel
DC061	Bulkhead Bracket LD-MD	Steel
DC062	Bulkhead Bracket VLD / 30 Series	Steel
T902	Clamp Bracket VLD-LD-MD	Steel



## Clevis

601-3-3	10-32 Thread	3/16 Pin	.190 Gap	Steel
601-3-4	10-32 Thread	1/4 Pin	.290 Gap	Steel
601-4-4	1/4-28 Thread	1/4 Pin	.290 Gap	Steel
601-4-4A	1/4-28 Thread	1/4 Pin	.120 Gap	Aluminum
601-4-5	1/4-28 Thread	5/16 Pin	.340 Gap	Steel
601-5-4	5/16-24 Thread	1/4 Pin	.290 Gap	Steel
601-5-5	5/16-24 Thread	5/16 Pin	.340 Gap	Steel
601-5-6	5/16-24 Thread	3/8 Pin	.440 Gap	Steel
601-5-8	5/16-24 Thread	1/2 Pin	.565 Gap	Steel
601-6-5	3/8-24 Thread	5/16 Pin	.340 Gap	Steel
601-6-6	3/8-24 Thread	3/8 Pin	.440 Gap	Steel
601-6-7	3/8-24 Thread	7/16 Pin	.500 Gap	Steel
601-6-8	3/8-24 Thread	1/2 Pin	.500 Gap	Steel
601-8-8	1/2-20 Thread	1/2 Pin	.565 Gap	Steel
CS540	None	5/16 Pin	.430 Gap	Steel
CS550	None	5/16 Pin	.195 Gap	Steel
AC310	1/4-28 Thread	SLOTTED	.280 Gap	Steel
-3(Pin Only)	None	3/16 Pin	None	Steel
-4(Pin Only)	None	1/4 Pin	None	Steel
-5(Pin Only)	None	5/16 Pin	None	Steel
-6(Pin Only)	None	3/8 Pin	None	Steel
-7(Pin Only)	None	7/16 Pin	None	Steel
-8(Pin Only)	None	1/2 Pin	None	Steel



## Knobs & T-Handles

165-103-001	1/4-20 2" Black Knob
165-103-002	1/4-28 2" Black Knob
165-103-003	5/16-24 2" Black Knob
165-103-004	3/8-24 2" Black Knob
165-103-006	5/16-18 2" Black Knob
165-172-002	1/4-20 Black T-Handle (STOP)
165-172-003	1/4-20 Red T-Handle (SHUTOFF)
165-172-005	1/4-20 Black T-Handle
165-172-007	10/32 Aluminum T-Handle
165-172-013	5/16-18 Black T-Handle
165-172-014	1/4-28 Black T-Handle
165-172-012	1 1/4" Knob (Blank Hole)
165-172-306	1/4-20 1" Black Knob
165-172-307	10-32 1" Black Knob
165-172-307A	10-32 1" Aluminum Knob
165-172-308	1/4-28 1" Black Knob
165-172-309	1/4-20 1" Black Knob (CHOKE)
165-172-316RF	1/4-20 2" Red Knob (FIRE)
165-172-317	1/4-20 1" Black Knob (STOP)
165-172-321	1/4-20 1" Black Knob (THROTTLE)
165-172-500	10-32 3/4 Black Knob
165-172-501	1/4-20 1 3/8 Black Knob
165-172-809	Twist Lock Replacement Handle
300-057-008	Twist Lock T-Handle (Aluminum)
165-183-001	1/4-28 PTO Knob (Red)
165-183-002	1/4-20 PTO Knob (Red)
165-183-003	5/16-18 PTO Knob (Red)
165-183-004	3/8-24 PTO Knob (Red)



## Ball Joints

175-403-001Q	1/4-28 X 1/4-28 Internal Spring Quick Disconnect
175-403-001XQ	1/4-28 X 1/4-28 External Spring Quick Disconnect
175-403-002S	5/16-24 X 5/16-24 Solid Ball Joint
175-403-002Q	5/16-24 X 5/16-24 Internal Spring Quick Disconnect
175-403-002XQ	5/16-24 X 5/16-24 External Spring Quick Disconnect
175-403-003	10-32 X 10-32 Snap-Out Ball Joint
175-403-003Q	10-32 X 10-32 Internal Spring Quick Disconnect
175-403-003AQ	10-32 X 10-32 Internal Spring Quick Disconnect (Aluminum)
175-403-003TQ	10-32 X 10-32 Internal Spring Quick Disconnect (Aluminum w/ <b>TITANIUM</b> Stud)
175-403-004	1/4-28 X 1/4-28 Snap-Out Ball Joint
175-403-004S	1/4-28 X 1/4-28 Solid Ball Joint
175-403-005	10-32 X 1/4-28 (Stud) Snap-Out Ball Joint
175-403-005Q	10-32 X 1/4-28 (Stud) Internal Spring Quick Disconnect
175-403-005AQ	10-32 X 1/4-28 (Stud) Internal Spring Quick Disconnect (Aluminum)
175-403-005TQ	10-32 X 1/4-28 (Stud) Internal Spring Quick Disconnect (Aluminum w/ <b>TITANIUM</b> Stud)
175-403-006	3/8-24 x 3/8-24 Solid Ball Joint
175-403-006Q	3/8-24 X 3/8-24 Internal Spring Quick Disconnect
175-403-007-6Q	7/16-24 X 3/8-24 (Stud) External Spring Quick Disconnect
175-403-M27	Swadge on Ball Joint (1/16 Cable)
DS-107	1/4-28 X 1/4-28 Straight Ball Joint
DS-108SN	5/16-24 X 5/16-24 Straight Ball Joint
403-001	1/4-28 Ball Joint Stud Only (Large Diam. Ball For Ext. Spring)
403-003	10-32 Ball Joint Stud Only
403-003T	10-32 Ball Joint Stud Only ( <b>TITANIUM</b> )
403-005	1/4-28 Ball Joint Stud Only
403-005T	1/4-28 Ball Joint Stud Only ( <b>TITANIUM</b> )



## Pivots

	Thread	Shank	Grip	
O91-3-3-2	10-32	3/16	1/8	Brass
O91-3-4-2	10-32	1/4	1/8	Brass
O91-3-4-4	10-32	1/4	1/4	Brass
O91-4-4-4	1/4-28	1/4	1/4	Brass
O91-W-3-4	Wire	3/16	1/4	Brass
O91-W-4-4	Wire	1/4	1/4	Brass
O91-W-4-8	Wire	1/4	1/2	Brass
DR046-1	10-32	1/4	1/8	Steel
DR046-2	1/4-28	1/4	1/8	Steel
DR046-3	5/16-24	1/4	1/8	Steel
DR050-1	10-32	5/16	1/8	Steel
DR050-2	1/4-28	5/16	1/8	Steel
DR050-3	5/16-24	5/16	1/8	Steel
DR060-1	10-32	3/8	.200	Steel
DR060-2	1/4-28	3/8	.200	Steel
DR060-3	5/16-24	3/8	.200	Steel
DR126-2	1/4-28	5/16	.400	Steel



## Eyelets

EE-3-5-A	10-32	5/16	1 Inch	Aluminum
EE-4-5-A	1/4-28	5/16	1 Inch	Aluminum



## Rod Ends

		Female Thread	Male Thread	Stud Size	Hole Size	
CREF-3-3	Right Hand	10-32	xxxx	xxxx	3/16	Steel
CREF-3-3A	Right Hand	10-32	xxxx	xxxx	3/16	Aluminum
CREF-3-3S	Right Hand	10-32	xxxx	10-32	3/16	Steel
CREF-3L-3	Left Hand	10-32	xxxx	xxxx	3/16	Steel
CREF-3-4S	Right Hand	10-32	xxxx	1/4-28	xxxx	Steel
CREM-3-3	Right Hand	xxxx	10-32	xxxx	3/16	Steel
CREM-3L-3	Left Hand	xxxx	10-32	xxxx	3/16	Steel
CREF-4-4	Right Hand	1/4-28	xxxx	xxxx	1/4	Steel
CREF-4-4S	Right Hand	1/4-28	xxxx	1/4-28	xxxx	Steel
CREF-4L-4	Left Hand	1/4-28	xxxx	xxxx	1/4	Steel
CREM-4-4	Right Hand	xxxx	1/4-28	xxxx	1/4	Steel
CREF-5-5	Right Hand	5/16-24	xxxx	xxxx	5/16	Steel
CREF-5-5S	Right Hand	5/16-24	xxxx	5/16-24	xxxx	Steel
CREF-5L-5	Left Hand	5/16-24	xxxx	xxxx	5/16	Steel
CREM-5-5	Right Hand	xxxx	5/16-24	xxxx	5/16	Steel
CREF-6-6	Right Hand	3/8-24	xxxx	xxxx	3/8	Steel
CREF-6-6S	Right Hand	3/8-24	xxxx	3/8-24	xxxx	Steel
CREF-6L-6	Left Hand	3/8-24	xxxx	xxxx	3/8	Steel
CREM-6-6	Right Hand	xxxx	3/8-24	xxxx	3/8	Steel
CREF-7-7	Right Hand	7/16-20	xxxx	xxxx	7/16	Steel
CREM-7-7	Right Hand	xxxx	7/16-20	xxxx	7/16	Steel
CREF-8-8	Right Hand	1/2-20	xxxx	xxxx	1/2	Steel
CREF-8-8S	Right Hand	1/2-20	xxxx	1/2-20	xxxx	Steel
CREM-8-8	Right Hand	xxxx	1/2-20	xxxx	1/2	Steel
CREF-10-10	Right Hand	5/8-18	xxxx	xxxx	5/8	Steel
CREM-10-10	Right Hand	xxxx	5/8-18	xxxx	5/8	Steel
CREM-10L-10	Left Hand	xxxx	5/8-18	xxxx	5/8	Steel
CREF-12-12	Right Hand	3/4-16	xxxx	xxxx	3/4	Steel
CREM-12-12	Right Hand	xxxx	3/4-16	xxxx	3/4	Steel
RSM-12-10	Right Hand	xxxx	3/4-16	xxxx	5/8	High Strength Steel
RSM-12L-10	Left Hand	xxxx	3/4-16	xxxx	5/8	High Strength Steel



Different Grade Materials are Available for Most Rod Ends.

## Pertronix Ignitor

"NEVER CHANGE POINTS AGAIN"  
A Solid State Electronic System  
Fits Entirely Inside the  
Distributor  
No Complicated  
Wiring Makes  
Installation Easy  
Compatible with 12-  
Volt Negative Ground  
Systems  
Guaranteed for 30  
Months



## Pertronix Ignitor II

PerTronix's Ignitor II is now available for most automotive, marine, industrial and agricultural applications. The Ignitor II senses current levels in the coil and adjusts the dwell to maintain peak energy throughout the entire RPM range. Senses incorrectly wired Ignitor II or a "key left on" condition and shuts down the system protecting the coil and other components from damage.



## Pertronix HEI Distributors

Pertronix HEI Ignition Systems  
NEW Distributor  
Operates Without Misfires up  
to a Minimum 7500RPM  
Nearly 3000RPM Higher than  
most Original HEI Distributors  
Produces 67% more Energy  
in the Coil  
Delivers twice the Energy  
Across the Spark Gap (During  
a 1 Millisecond Burn Time)  
Spark Duration and more  
Energy to the Spark Plug Allows  
Wider Plug Gaps  
Spark Plug Gaps can be set to  
(.050"-.055") Which Increases  
Flame Kernel Growth



## HEI Distributor Tune-up kits

HEI Tune-up kits Available  
Adjustable Vacuum Advance & Curve Kit



## Pertronix Flame Thrower Plug Wires

Spark Plug Wires Available in 7mm & 8mm Sizes  
Features two Current Paths  
Low 500ohm per Foot Resistance  
Fiberglass Reinforced Braid for Added Strength  
and Flexibility  
Lifetime Warranty  
MADE IN U.S.A.



## Pertronix Flame Thrower Coils

40,000 Available Volts (Ignitor)  
45,000 Available Volts (Ignitor II)  
Maximize Energy and Reliability Over the  
Full RPM Range  
Enables Larger Plug Gaps for Greater Fuel  
Efficiency, and More Power  
Delivers an Average of 15% More Spark  
Energy and Voltage



## Multiple Spark Box

Second Strike is the only ignition system to provide a powerful second spark throughout the entire RPM range. No special distributor or coil is required. A simple five-wire hookup to your existing system completes the installation. Also has a built in digital rev limiter.



## Miscellaneous Cables

Parachute cables are available in several styles.



We can make several styles of throttle cables.  
From Industrial to Performance Applications



We are able to make most clutch cables.  
From large scale trucks to cars.



Specialty Cables & Obsolete Items Can Be Custom Made.



Sample needed to duplicate

## Marine Levers



**Unidrum Lever Control  
Use With VLD & LD Cables**



**Magura Single Axis Control Levers  
Use VLD And LD Series Push Pull Cables  
Controls Are Available In Friction  
Or Detented Controls**



**Marine Controls Available In Single  
Or Dual Handle. Uses VLD And LD 3 Inch  
Travel Cables**



**Industrial Throttle Pedals  
Can use Push Pull or Pull Only Cables.**



**Aluminum Throttle Pedal  
Uses Push Pull Cable**



**Marine Controls  
Available in Single or Dual Handle**



**Heavy Duty Lever  
Uses LD & MD Cable**

### Billet Aluminum Throttle Pedal

Machined From 7075 T6 Aluminum  
Spring Loaded Pedal Pad  
Machined Aluminum Reversible Splined Arm  
Double Splined Shafts (36 Adjustments)  
Aluminum Die Stamped Mounting Bracket  
1 5/8" Wide For More Stability  
Oil Lite Bushings For Smoother Operation  
Longer Lasting Performance  
Available in Satin & Polished Finish  
**P/N MV-201 (Satin w/Insert)**  
**P/N MV-202 (Polished w/Insert)**



### Steel Spoon Throttle Pedal

Early Ford "Spoon" Style Pedal  
Laser Cut Reversible Splined Arm (36 Adjustments)  
Die Stamped Mounting Brackets 1 5/8" Wide For More Stability  
Oil Lite Bushings For Smoother Operation  
Double Splined Shaft  
Chrome Finish  
**\*\*PEDAL IS SHOWN WITH OPTIONAL RUBBER INSERT\*\***  
**P/N MV-100 (Pedal)**  
**P/N MV-100R (Rubber Insert)**



### Billet Aluminum Brake Pad

Machined From 7075 T6 Aluminum  
Rubber Insert  
Available in Satin & Polished Finish  
**P/N MV-2001 (Satin w/Insert)**  
**P/N MV-2002 (Polished w/Insert)**



### Steel Brake Pad

Chrome Finish  
**P/N MV-1000 Pad w/Rubber Insert)**



### Universal Throttle Cable

Nylon Lined With Flexible Stainless Inner Cable  
U-Cut to Fit  
Comes Complete with Ball Joint and Pivot  
Cable Comes Standard in 24 Inches  
Special Lengths Available  
**P/N UV-100-24**  
**P/N UV-101-24 (Barrel Style for TPI)**



### Stainless Universal Throttle Cable

Nylon Lined with Flexible Stainless Inner Cable  
Braided Stainless Steel Housing  
U-Cut to Fit  
Comes Complete with Ball Joint and Pivot  
Cable Comes Standard in 24 Inches  
Special Lengths Available  
**P/N UV-200-24**  
**P/N UV-201-24 (Barrel Style for TPI)**



### Throttle Cable Bracket

**B-T-100** Stainless throttle cable bracket w/springs  
**B-T-101** Stainless throttle cable bracket  
**SP-100** Dual stainless spring kit



### Telescopic Throttle Cable

Telescopic Design Mount Direct From Firewall to Carb.  
No Manifold Bracket Needed  
Seals Out Engine Fumes and Heat From Passenger Compartment  
Polished Stainless Steel  
**P/N VT-10-16**



## Single Remote Lever

Billet Aluminum Construction  
Built in Positive Stop  
Nylon Lined Cable Housing  
Available in Flexible inner or Solid Stainless Wire  
U-Cut to Fit  
Custom Length Cables are Available  
Comes Complete with No Fray Stop & Mounting Clips  
**P/N L-100-84 (84 inch Cable)**  
**P/N L-100-180 (180 inch Cable)**



## Double Remote Lever

Billet Aluminum Construction  
Built in Positive Stop  
7 ft. & 15ft. Nylon Lined Cable Housing  
Flexible Stainless Inner Cable  
U-Cut to Fit  
Custom Length Cables are Available  
Comes Complete with No Fray Stop & Mounting Clips  
**P/N L-200-84-180**



## Billet Multi Use Cable

Billet Aluminum Knob  
Aluminum Head Tube  
10 ft. Nylon Lined Cable Housing  
Available in Flexible inner or Solid Stainless Wire  
U-Cut to Fit  
Custom Length Cables are Available  
Comes Complete with No Fray Stop & Mounting Clips  
**P/N 69V00-120 (Round Knob)**  
**P/N 69V00-120T (Aluminum T-Handle)**  
**P/N 69V00-120S (Round Knob with Solid Wire)**  
**P/N 69V00-120ST (Aluminum T-Handle with Solid Wire)**



## Billet Multi Use Cable w/Stainless Housing

Billet Aluminum Knob  
Aluminum Head Tube  
7 ft. Braided Stainless Steel Nylon Lined Cable Housing  
Available in Flexible inner or Solid Stainless Wire  
U-Cut to Fit  
Custom Length Cables are Available  
Comes Complete with No Fray Stop & Mounting Clips  
**P/N 69S00-84 (Round Knob)**  
**P/N 69S00-84T (Aluminum T-Handle)**  
**P/N 69S00-84S (Round Knob with Solid Wire)**  
**P/N 69S00-84ST (Aluminum T-Handle with Solid Wire)**



## Black Nylon Line Clamps

Available in Sizes: 3/16", 1/4", 5/16", 3/8", 7/16", 1/2"  
Ideal for Brake Lines & Cables  
Sold in Bags of Ten  
**P/N MV-3 (3/16)**      **P/N MV-6 (3/8)**  
**P/N MV-4 (1/4)**      **P/N MV-7 (7/16)**  
**P/N MV-5 (5/16)**      **P/N MV-8 (1/2)**



## Stainless Steel Line Clamps

Available in Sizes: 3/16", 1/4", 5/16", 3/8", 1/2"  
Ideal for Brake Lines & Cables  
Includes Stainless Button Head Allen Screws  
**P/N SS-3 (3/16) Pack of 12**  
**P/N SS-4 (1/4) Pack of 12**  
**P/N SS-5 (5/16) Pack of 6**  
**P/N SS-6 (3/8) Pack of 6**  
**P/N SS-8 (1/2) Pack of 6**

## Stainless Steel Double Clamps

**P/N DSSC-3-3 (3/16) Pack of 6**  
**P/N DSSC-3-6 (3/16 X 3/8) Pack of 6**  
**P/N DSSC-5-6 (5/16 X 3/8) Pack of 6**  
**P/N DSSC-6-6 (3/8) Pack of 6**  
**P/N DSSC-8-8 (1/2) Pack of 6**



## Collet End Rod



**P/N 156-416-10**  
(For 1/16 cable only)

## Brake Levers & Ez-Bracket

### OEM Style Foot Brake Lever

Push on Push off Activation & Deactivation  
Brake Switch Included  
**P/N B2000**



### Lay-Down Ratchet Style Lever

Easy Mounting  
Total Length 11 inches  
From Center of Mount to Center of Mount 4 1/8 inches  
Arm Extends Down 1 5/8 inches Below Mounting Tabs  
**P/N B1000**



### Emergency Brake Junction Bracket

Makes Ordering Custom Brake Cables Easy  
Total Bracket Length is 7 1/2 inches  
**P/N B-EZ100**



## Brake Hardware

### Center Pull bracket

(Wheel to wheel setup)



**P/N CPB-1**

### Brake Cable Coupler

(For joining brake cables)



**P/N BCC-1**

### Dual cable housing bracket

(Bolt-on)



**P/N B-E-2-8**

### Equalizer bar

(For use on a 3 cable system)



**P/N BEQ-3**

### Dual Cable housing bracket

(Weld-on)



**P/N B-2-8**

### Single Cable housing bracket

(Bolt-on)



**P/N B-E-1-8**

## How to order Street Rod Brake Cables

All of our brake cables are built with OEM style flat wound housing. Stainless steel inner cable and seals are used to help promote extended cable life. Our cables feature totally swaged construction which eliminates set screws that can come loose.

### INSTRUCTIONS

1. Familiarize yourself with various hardware and brake layout styles.
2. Fill in the blanks on the layout sheet and return by mail or FAX.  
(HELPFUL HINT: USE VACUUM HOSE TO LAYOUT HOUSING MEASUREMENT)

We will ship your custom set of brake cables, designed for your car, within 3 days of receiving your order.

**DON'T TRUST YOUR CAR INVESTMENT TO ANYTHING BUT THE BEST.**

**\*\*\*YOU DESERVE IT\*\*\***

### Conduit Caps



157-411-1



157-411



157-412



157-413-1



157-415



157-416

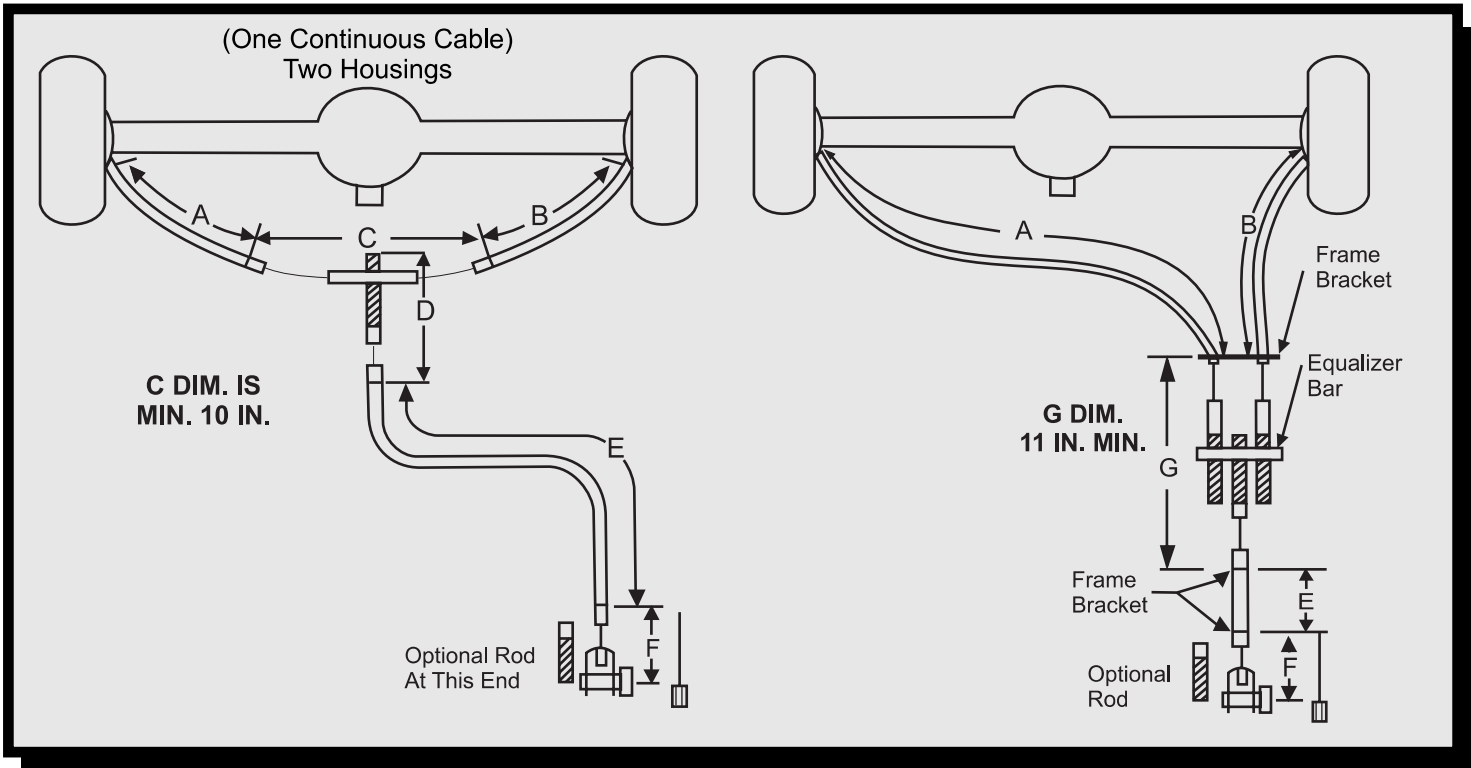


157-423

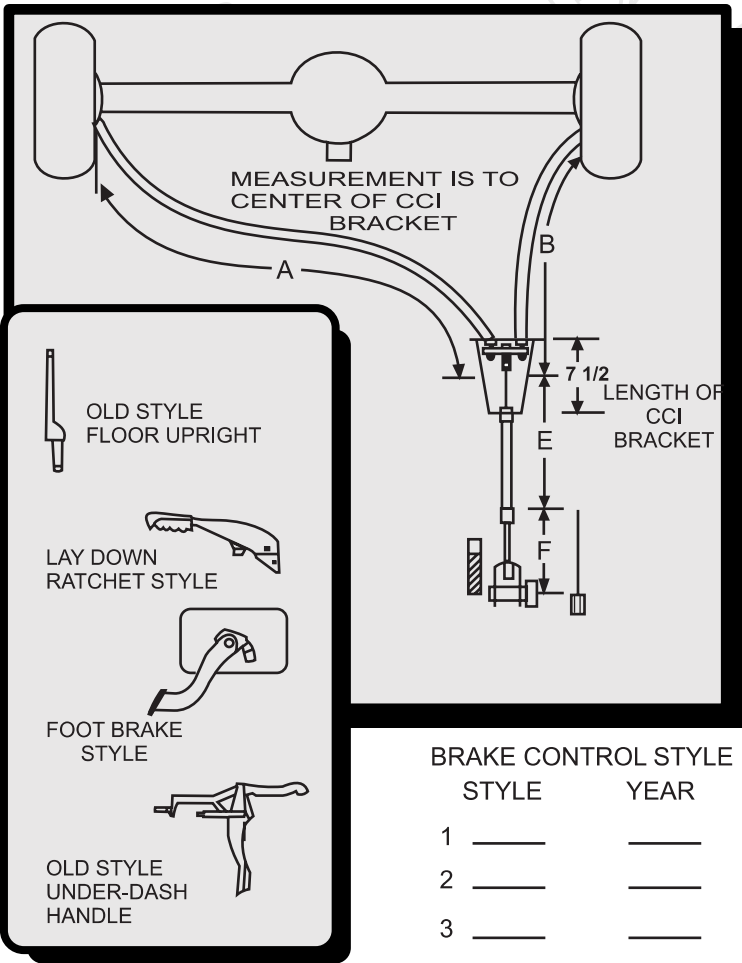
P/N	"A" Mounting Length	"B" Mounting OD	"C" Total Part Length
157-411-1	1.30	1/2-20 Threaded	2.20
157-411	2.40	3/8-24 Threaded	3.30
157-412	.850	.430	1.75
157-413-1	.500	.530	1.40
157-415	.700	.530	1.60
157-416	1.30	.437	2.20
157-423	.500	.530	1.40

Center Pull Style

Side Pull Style



Side Pull W/ Cci Bracket



- A- Passenger Side Housing-Backing Plate Or Caliper Bracket To Front Housing Bracket Or Center Of CCI Bracket
- B- Driver Side Housing-Backing Plate Or Caliper Bracket To Front Housing Bracket Or Center Of CCI Bracket
- C- Exposed Cable (Center Pull Only) One Continuous Cable
- D- Mounting Bracket To End Of Adjusting Rod/Front Cable
- E- Front Housing - Bracket To Bracket Or Center Of CCI Bracket
- F- Mounting Bracket To Clevis Pin In Lever, Tip Of Threaded Rod Or Inside Of Cable Stop
- G- Mounting Bracket To Mounting Bracket

A \_\_\_\_\_ E \_\_\_\_\_  
 B \_\_\_\_\_ F \_\_\_\_\_  
 \* C \_\_\_\_\_ \* G \_\_\_\_\_  
 \* D \_\_\_\_\_

\* CCI BRACKET DOESN'T REQUIRE THESE DIMENSIONS

BRAKE TYPE MAKE YR.  
 DRUM \_\_\_\_\_  
 DISC \_\_\_\_\_

REAR END TYPE YR.  
 FORD \_\_\_\_\_  
 CHEVY \_\_\_\_\_  
 MOPAR \_\_\_\_\_

BRAKE CONTROL STYLE  
 STYLE YEAR  
 1 \_\_\_\_\_  
 2 \_\_\_\_\_  
 3 \_\_\_\_\_  
 4 \_\_\_\_\_

**Apparel**



**P/N GT-1**  
Available: S - L



**P/N TS-R1**  
Available: S - XXL



**P/N APRON-1**



**P/N TS-R-2**  
Available: L - XXL



**P/N TS-SR-1**  
Available: L - XXL



**P/N TS-R-3**  
Available: S - XXL

All our T-shirts are printed on Hanes Beefy-T